



£1,150 PCM Ashley Hill | Montpelier | Bristol | BS7 9BE

www.kendallharper.com | lettings@kendallharper.com

Kendall Harper

We are delighted to offer this well presented one bedroom apartment which has been finished to a high standard throughout.


The apartment is situated on the first floor of a grand period property located on Ashley Hill, which is within easy reach of the City Centre and the local shops along Gloucester Road.

The property is tastefully finished with many period features including coving and ceiling roses and the accommodation comprises a bright and airy entrance hall with doors to the sitting room/kitchen, a double bedroom and new modern bathroom.

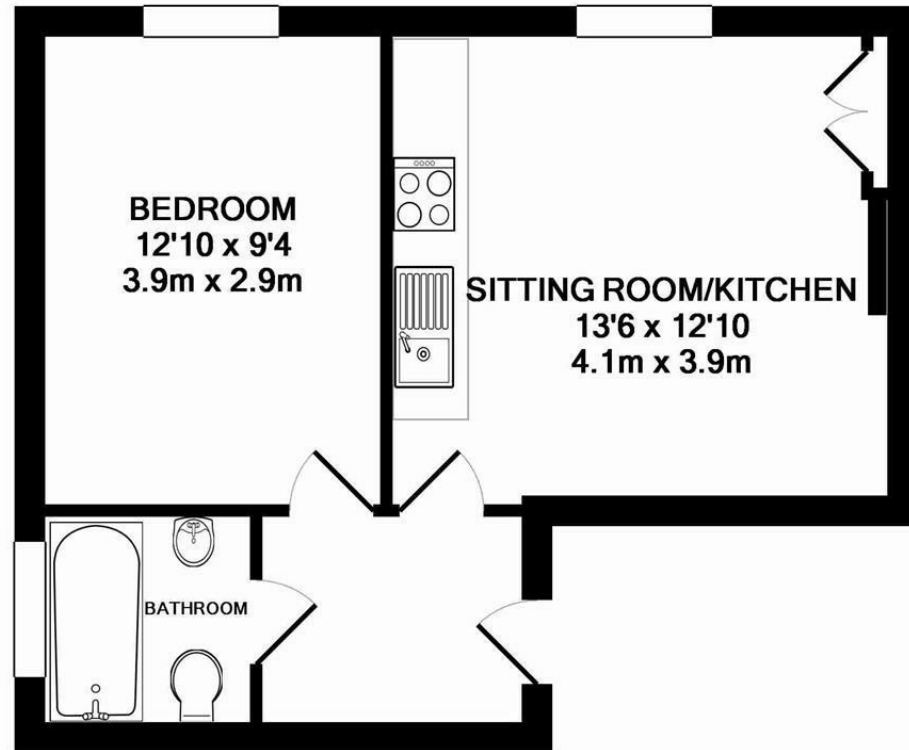
The sitting room/kitchen is fitted with integrated appliances including dishwasher, fridge/freezer, washer/dryer and oven with gas hob over. Further benefits include a modern gas combination boiler, communal front garden and double glazing throughout. Suitable for a single occupant or a professional couple and available with a flexible move in date around July/August 2026. Viewings are highly recommended!





Energy Efficiency Rating		
	Current	Potential
<i>Very energy efficient - lower running costs</i>		
(92 plus) A		
(81-91) B		
(69-80) C	73	79
(55-68) D		
(39-54) E		
(21-38) F		
(1-20) G		
<i>Not energy efficient - higher running costs</i>		
England & Wales	EU Directive 2002/91/EC	

These particulars, whilst believed to be accurate, are set out as a general outline only for guidance and do not constitute any part of an offer or contract. Intending purchasers should not rely on them as statements of representation of fact, but must satisfy themselves by inspection or otherwise as to their accuracy. No person in this firm's employment has the authority to make or give any representation or warranty in respect of the property.



TOTAL APPROX. FLOOR AREA 369 SQ.FT. (34.3 SQ.M.)

Whilst every attempt has been made to ensure the accuracy of the floor plan contained here, measurements of doors, windows, rooms and any other items are approximate and no responsibility is taken for any error, omission, or mis-statement. This plan is for illustrative purposes only and should be used as such by any prospective purchaser. The services, systems and appliances shown have not been tested and no guarantee as to their operability or efficiency can be given

Made with Metropix ©2016